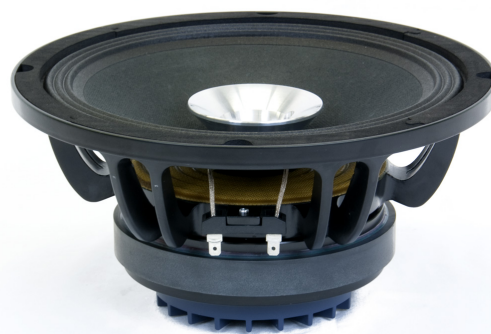


CSX10

10" Coaxial



MOUNTING INFORMATION

Overall Diameter	263 mm (10")
Bolt Circle Diameter	247 mm
Baffle cutout Diameter	230 mm
Depth	134 mm
Mounting Depth	121 mm
Net Weight	4.7 Kg

SPECIFICATIONS

Nominal Impedance	8 Ohm
RMS Power	200 W
MAX Power	400 W
Sensitivity (1W/1m)	96 dB
Frequency Range	73-20000 Hz
Voice Coil Diameter	50 mm
Magnet	Ferrite
Basket Material	Aluminum
Recomm. crossover frequency	1.6 KHz

THIELE AND SMALL PARAMETERS

Fs	73 Hz
Re	5.2 Ohm
Qes	0.64
Qms	11
Qts	0.6
Vas	42 l
Sd	353 cm ²
Xmax	2 mm
Mms	19 gr
Bl	15 Txm
Le	8.7 mH
EBP	18 Hz