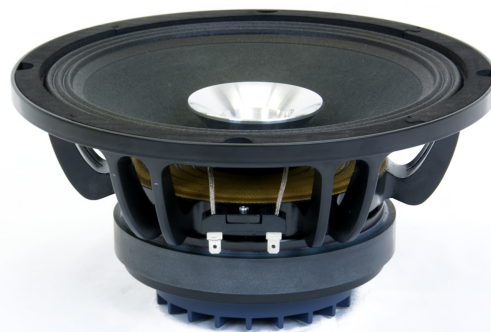


# CSX10

10" Coaxial



## **MOUNTING INFORMATION**

Overall Diameter	263 mm (10")
Bolt Circle Diameter	247 mm
Baffle cutout Diameter	230 mm
Depth	134 mm
Mounting Depth	121 mm
Net Weight	4.7 Kg

## **SPECIFICATIONS**

Nominal Impedance	8 Ohm
RMS Power	200 W
MAX Power	400 W
Sensitivity (1W/1m)	96 dB
Frequency Range	73-20000 Hz
Voice Coil Diameter	50 mm
Magnet	Ferrite
Basket Material	Aluminum
Recomm. crossover frequency	1.6 KHz

## **THIELE AND SMALL PARAMETERS**

Fs	73 Hz
Re	5.2 Ohm
Qes	0.64
Qms	11
Qts	0.6
Vas	42 l
Sd	353 cm <sup>2</sup>
Xmax	2 mm
Mms	19 gr
Bl	15 Txm
Le	8.7 mH
EBP	18 Hz